

ASPHALT ANALYZER

YOU!

Safe Extractions

ALWAYS
2 STEPS
AHEAD!



We support innovation!

Our newest Analyzer YOU! is the user-friendly and health-friendly further development of the past Analyzer generation. Smart and well-thought-out solutions reduce solvent contact even more effectively. The Asphalt Analyzer is an innovation that originated in our house. With our original as the basis, we are constantly developing new generations that are tailored to your needs. We are looking into the future!

Our Asphalt Analyzers:

- ▶ NEW: Asphalt Analyzer YOU!
- ▶ NEW: Asphalt Analyzer YOU! Touch
- ▶ NEW: Asphalt Analyzer YOU! PG
- ▶ Asphalt Analyzer PURE
- ▶ Asphalt Analyzer PURIST

Recycling Asphalt

The reuse of asphalt is mandatory and necessary! Only with sustainable awareness and an optimized use of resources can we protect our planet and our families in the long term.

The new generation YOU! allows you to extract safely unknown asphalt.

Discover our new Asphalt Analyzer YOU! now and monitor your recycling asphalt!

Solvent

Every solvent has its challenges. It is therefore particularly helpful to be able to visually monitor the distillation process at the start of a solvent changeover.

Protection of health

We take your health very seriously. We implemented quick and consistent the risk minimization measures (RMM) elaborated when using trichlorethylene in our machines. With our concept YOU! we are pushing ahead with their further development and ensuring that we take the next step.



Our solutions for minimized solvent contact:

- ▶ Direct connection to the rotary evaporator
- ▶ Screwed recovery cover
- ▶ Electromagnetic lock on the washing chamber and centrifuge prevent accidental opening
- ▶ The new 2.5 kg washing drum

We aim to maintain the high safety standard even when using tetrachlorethylene.

We care about YOU!

You wish...

- ▶ save extraction
- ▶ environmentally friendly processes
- ▶ smart solutions for your workflow
- ▶ health-friendly procedures
- ▶ cool design
- ▶ easy handling
- ▶ reliable results
- ▶ engineering design performance

We are your partner for all solutions!

*Discover your
Asphalt Analyzer
NOW!*



Keep your colleagues in
mind and give away a
smile today!



Asphalt Analyzer YOU!

EN 12697/1 - ASTM D8159-2018 - AASHTO for the safe extraction of recycling asphalt and determination of the binder content using non-flammable solvents.

What has changed?

- ▶ Two maintenance windows in the recovery cover
- ▶ Direct connection to the rotary evaporator
- ▶ Temperature limiters above recovery cover
- ▶ Additional inlet sieve in the recovery system for catching of very light asphalt components
- ▶ The use of the new 2.5 kg washing drum
- ▶ Use of the 2.5 kg or 3.5 kg washing drum possible

What has remained the same?

- ▶ Use of ultrasonic sensor in the washing chamber
- ▶ Preselectable number of washing cycles and drying cycles
- ▶ Closed solvent cycle
- ▶ Automatic drying of minerals and filler
- ▶ Processing time of at least 40 min.
- ▶ Reduced environmental impact
- ▶ Solvent loss <20ml per extraction

Technical Data

Dimensions appr.	1290 x 800 x 1400 mm
Electrical specifications	3/N/PE, 400 V, 50 Hz, 7 kW
Weight	ca. 254 kg

20-11300

Advantage:

- ▶ Two viewing windows for visual monitoring of the recovery process
- ▶ Direct connection to the rotary evaporator
- ▶ Easily accessible temperature limiters
- ▶ An additional inlet sieve in the recovery collects the smallest asphalt components
- ▶ Visualization of the recovery process
- ▶ Easy maintenance and service
- ▶ User friendly software
- ▶ Proven technology
- ▶ Secure, fast extraction results

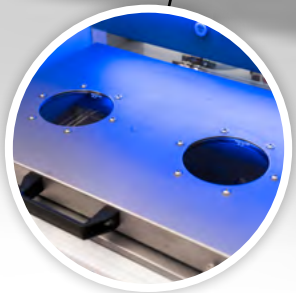
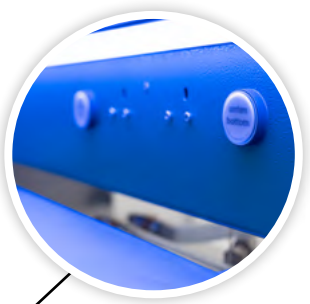


Solvent Log Book

YOU!

Safe Extractions

**NEW
SAVE
SUSTAINABLE**



Advantage:

- ▶ Smart creation and storage of test sequence programs for different types of mix
- ▶ Program sequence visually visible
- ▶ Storage of process-relevant test parameters (running time, wash cycles, drying cycles, temperatures etc.)
- ▶ Fault diagnosis on site or via remote maintenance via the Internet
- ▶ Program update / solvent change possible via USB stick

**ACCESSOIRES****Option Closed Washing Cycle**

To increase efficiency and accelerate the washing process. The inlet to the centrifuge can be closed using a manually operated slide. A closed wash cycle with an adjustable duration of 3 to 15 minutes and an adjustable amount of solvent can then be run in advance under program control. The message for unlocking appears automatically so that the inlet is opened manually and the further program sequence is released. The remaining washing time is thus significantly reduced.

20-1100E220

Sampling Attachment

with gas tube and special clamp for rotary evaporator flask 1000 and 2000 ml attached at the upper outlet cock of the recovery still. The laboratory staff didn't get in contact with any solvent and bitumen mixtures.

20-1100E200



TOUCH PANEL

KIT VISUAL RECOVERY

Two windows in the recovery cover allow an observation of the current recovery process on the clean and dirty side. A sieve inlet keep the light asphalt components, which has not been collected in the centrifuge. Two temperature limiter with LED maintain a easy access for heating and operation of distillation processes. Including a direct connection for bituminous medium into a rotary evaporation apparatus.



NOW



BEFORE

Asphalt Analyzer YOU! Touch

EN 12697/1 - ASTM D8159-2018 - AASHTO for extraction and determination of binder content using non-flammable solvents.

With the further development of the Asphalt Analyzer YOU, you can control the extraction even more intuitively via the touch display.

Technical Data

Dimensions appr.	1290 x 800 x 1400 mm
Electrical Data	3/N/PE, 400 V, 50 Hz, 7 kW
Weight	ca. 254 kg

20-11320

20-11340

Asphalt Analyzer YOU! PG

for rubber modified asphalt

ACCESSOIRES

**Washing Drum
2.5 kg**



20-1113

**Washing Drum
3.5 kg**



0.063 mm

20-1112

0.075 mm

20-1111

Closing Lid



20-1106

Centrifuge Cup



120 mm

20-0330

120 mm/ 300 g

20-0335

**Insert Paper for
Centrifuge Cup**



20-0340

Water Cooling Unit



20-1144

**Supply and Disposal
carriage**



20-9850

Disposal carriage



20-9851

Insert Tray



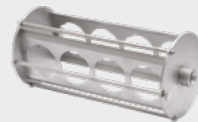
20-1100E250

Inlet sieve



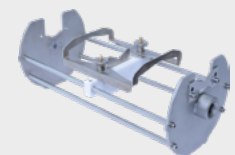
20-11300E25

**Rack Flasks for
Glass Test Cup
RTFOT**



20-1100E265

Rack Flasks



20-1100E260

infraTest Prüftechnik GmbH

Wiesenbachstraße 15
D-74336 Brackenheim-Botenheim
Tel.: +49 (0) 7135-95 00-0
Fax: + 49 (0) 7135-95 00-20
info@infraTest.net
www.infraTest.net

